



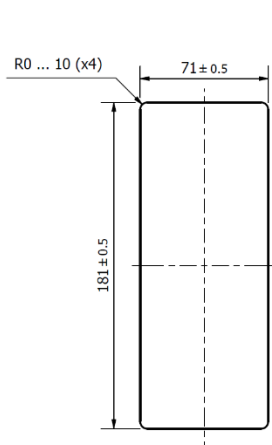
## Norphonic VoIP panel phone assembly - Berg Handset

- Excellent sound quality (STI = 0.9)
- Robust

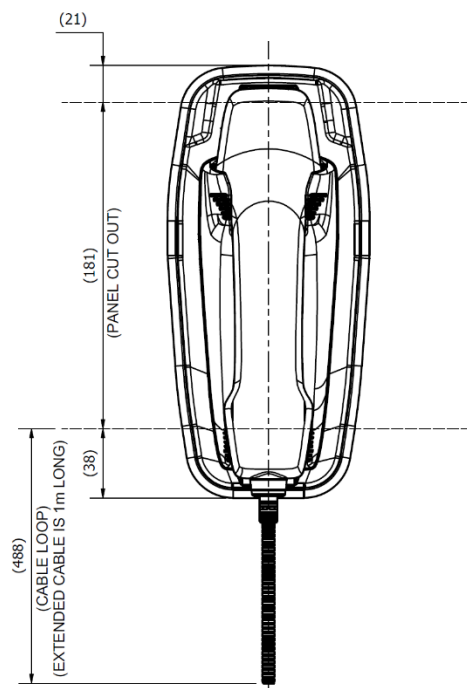
Assembling the Berg handset with a Holme base results in a panel phone which can be used in a wide array of applications. The only requirements are for the panel to be cut-out contour to be as the one shown in the picture below. Please refer to our manual for more assembly details.

The handset consists of a high quality microphone and speaker, designed and tested for rugged environments. The robust handset and armoured cord ensure excellent protection against harsh environments.

**PANEL CUTOUT CONTOUR**



**POSITION OF USER SIDE PARTS**



## Technical Specifications

**Weather resistance:** Dust and waterproof to IP65  
(Dependent on mounting)

**Heavy duty performance:** Impact-, fall-, vibration- and shock-proof, able to perform in difficult environments

**Operating temperatures:** -25° C to + 65° C  
Relative humidity high: 93% R.H at 40° C (non-condensing)

**Casing material:** Polycarbonate

**Weight:** 0.54kg (with Holme 1.20kg)s

**Handset:** Robust handset with armoured stainless steel cord  
**Hook-switch:** Magnetic with no mechanical moving parts

**Microphone:** Noise cancelling dynamic mic, proven in noisy areas.

**Speaker:** 500hm 1W

**Excellent sound quality:** STI approved to 0.9 (Excellent Sound)

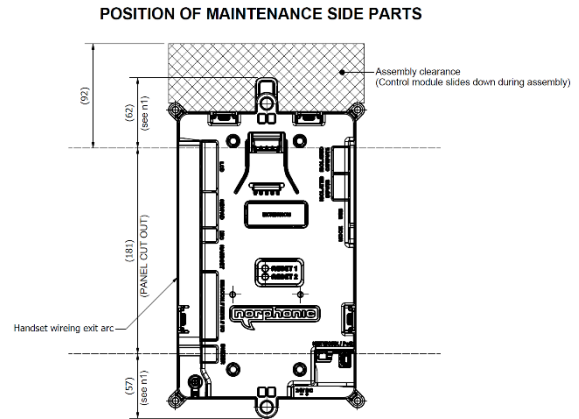
**Colour:** Black handset with yellow front panel.

**Weight:** 1.20 kg approx. (0.65kg Holme only)

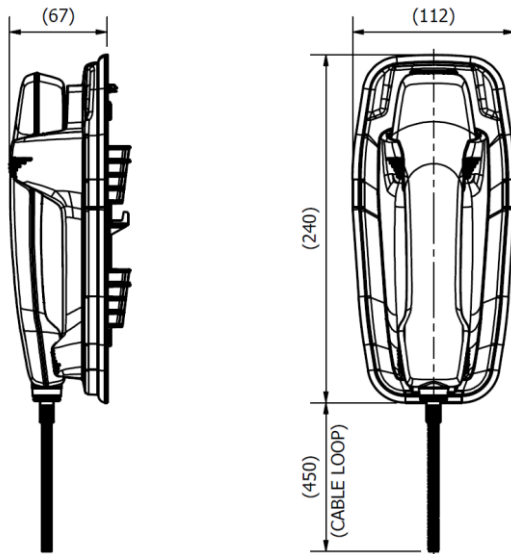
**Power supply:** 24V-48V DC input, or Power over Ethernet (PoE)

**Power consumption:** 3W nominal, 5W start-up

**Connection:** RJ11 plug for Handset Microphone and Speaker, 2-pin terminal plug for hook. Earthing cable.



## Dimensions



Learn more about our Innovations at  
[www.norphonic.com](http://www.norphonic.com)

Fjellsdalen 3, 5155 Bønes, Norway  
+47 55 62 75 20  
sales@norphonic.com

